

Integrated Learning and Content Management



Netop Learning Center is a robust online learning platform and content management system that allows businesses, training centers and educational institutions to build and administer custom courses, exams and questionnaires. Employees and students can access content on-demand and repeat lessons for maximum learning retention. Learning Center provides detailed statistics and reports on user progress. Based on the Microsoft.NET-based platform, Netop Learning Center can be seamlessly integrated with existing systems.

The Netop Learning Center consists of modules that form a comprehensive, integrated Learning Management System and a Content Management System, which makes it possible to deploy fast and easy knowledge upgrades to employees, students or customers. Netop Learning Center is 100% web-based so users can access learning from anywhere. Netop Learning Center is ideal for dual-use as both an online course tool and as a presentation tool for face-to-face learning in a classroom setting, and lets you easily administer education and training sessions in any environment.

Rapid Content Development

Easy to use tools allow even novice developers to rapidly build and administer content including courses, exams, quizzes and questionnaires.

Learning Anywhere

Build and deliver courses and training sessions quickly and easily to users online, in a classroom setting or using mobile devices.

Easy User Access

Deliver content directly from email with full tracking. Removes the log-on and search barriers for a higher usage rate by learners.

Online Registration & Certifications

Enables universities to deliver online content, map registrations and provide course certifications to public users.

Maximum Retention

Ensure maximum retention of acquired skills with automatic launching of courses and quizzes to be repeated when needed.

Automatic Scheduling

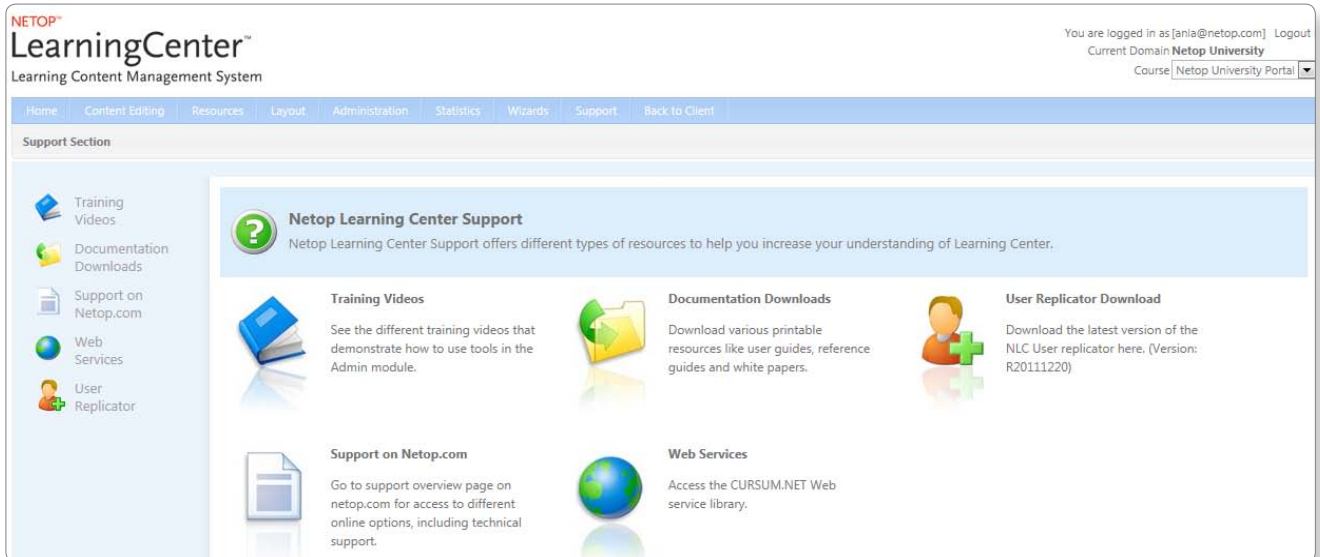
Set up an automatic release plan for course content and follow-ups. Release plans can be easily copied to fully automate ongoing training.

Single Sign-On

Easy integration with standard enterprise services including Microsoft Active Directory, ADFS or any SAML 2.0 compatible identity provider.

Tailor Made & Scalable Licensing

Netop Learning Center offers easy and scalable user based licensing, facilitating both permanent users such as staff, employees and students, and course based users.



Learning Center's easy-to-use, web-based interface empowers educators, managers and trainers to deploy flexible, customized content to anyone, anytime. Offer professional courses online and track training effectiveness with measurable results.

Netop Learning Center consists of modules that together form an integrated Learning Management System (LMS) and a Content Management System (CMS), which makes it possible to quickly and easily train anyone in your organization.

Netop Learning Center enables an organization to:

- Establish a common portal for all online course activities.
- Develop content including courses, exams, quizzes, and questionnaires.
- Manage courses and users.
- Generate statistical reports on user behavior.
- Create forums for user groups and individual discussions.
- Combine traditional learning methods with online course offerings, creating a blended learning environment.
- Netop Learning Center is 100% online-based, which means that the company and the users (with the necessary usernames and passwords) are able to access the system from any device with an Internet connection.
- Netop Learning Center is constructed to be used both as a 100% online course tool and as a presentation tool in classroom education/training sessions.

